

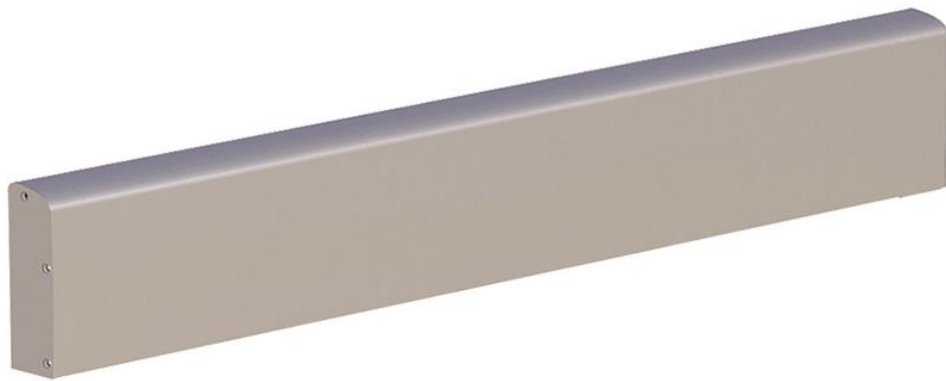
ProfiloSmart

SENZA LIMITI



CLEANING PROCEDURES

Aluminium-only
products



- Track & cover (11-101-* | 11-102-* | 11-103-*)
- Toilet paper holder for horiz. track (21-321-*)
- Shower mixer support for horiz. track (32-221-*)
- Height adjust. washbasin bracket (41-131-* | 41-132-* | 41-133-*)
- Washbasin bracket for horiz. track (41-141-* | 41-142-* | 41-143-*)
- Zero-Gravity. Height adjust. washbasin bracket (41-171-* | 41-172-* | 41-173-*)
- Zero-Gravity. Washbasin bracket for horiz. track (41-181-* | 41-182-* | 41-183-*)
- Holders for horiz. track (41-421-* | 41-521-* | 41-621-*)
- Holders for horiz. washbasin bracket (41-401-* | 41-501-* | 41-601-* | 41-701-*)
- Baskets (51-121-* | 51-122-* | 51-123-* | 51-124-* | 51-125-*)
- Shelves (51-321-* | 51-322-* | 51-323-* | 51-324-* | 51-325-* | 51-326-*)
- Towel holders for horiz. track (51-421-* | 51-422-* | 51-423-*)

Aluminium-only products



These items should be washed using a mild soapy cleaning agent, or with hot water.

Important Notice: The use of corrosive, abrasive and chlorine-based cleaners and agents may result in damage or stains.

To Avoid the decalcification of aluminium surfaces, it is recommended that any residue of chalky deposits should be removed from all aluminium parts using a water-based solution of 3 parts of acetic acid with 7 parts of tap water. After cleaning, wipe down using a clean damp, soft cloth and clean water.

Arm Supports, Back Rest and Related products



- Wall mounted arm support (22-101-* | 22-102-* | 22-103-*)
- Height adjust. arm support (21-131-* | 21-132-* | 21-133-*)
- Arm support for horiz. track (21-141-* | 21-142-* | 21-143-*)
- Toilet paper holder for Arm support (25-101-*)
- Wall mounted backrest for toilet (22-201-*-)

Arm Supports, Back Rest and Related products



These items should be washed using a mild soapy cleaning agent, or with hot water.

Important Notice: The use of corrosive, abrasive and chlorine-based cleaners and agents may result in damage or stains.

The plastic components are treated with a special anti-bacterial varnishing and should not be treated with corrosive agents.

To Avoid the decalcification of aluminium surfaces, it is recommended that any residue of chalky deposits should be removed from all aluminium parts using a water-based solution of 3 parts of acetic acid with 7 parts of tap water. After cleaning, wipe down using a clean damp, soft cloth and clean water.

Ceramic Products and related accessories



- Wall mounted ceramic toilet, length 70 cm (22-202-00)
- Wall mounted ceramic toilet (22-301-00)
- Wall mounted ceramic bidet (22-302-00)
- Floor standing ceramic toilet (22-304-00)
- Floor standing ceramic bidet (22-305-00)
- Seat cover slim, thermoplastic, white (25-201-00)
- Seat cover, thermoplastic, white(25-202-00)

Ceramic Products and related accessories



Daily care. Clean the surfaces using soapy water or a common detergent to remove most stains and the dirt that may have deposited. Gel detergents and abrasive products are particularly recommended in combination with a scrub sponge of the "Scotch Brite" type. Thoroughly rinse the surface with abundant water.

How to prevent damages. We do not recommend the use of aggressive chemicals such as acetone, trichloroethylene or strong acids or bases. Some substances such as ink, cosmetics and dyes may stain the surface if in prolonged contact with the material. All stains can however be removed by following the directions below.

How to remove stubborn stains, scratches and burns. Small surface damage can be restored using a Scotch Brite (3M registered trademark) scrub sponge combined with a common abrasive cleaner. **Suitable products.** Detergent creams or powders which contain microgranules that scour the surface. Denatured ethyl alcohol can also be used, making sure the surface is then rinse. **Unsuitable products.** Solvents such as acetone or trichloroethylene and other chemicals such as strong acids (e.g. muriatic acid) or strong bases (e.g. caustic soda) or very aggressive substances for clearing sink drains.

Shower Seats



- Wall mounted shower seat (32-101-*)
- Wall mounted backrest & armrest (32-102-*)
- Height adjust. shower seat (31-131-*)
- Height adjust. shower seat w/backrest & armrest (31-132-*)
- Shower seat for horiz. track (31-141-*)
- Shower seat for horiz. track w/backrest & armrest (31-142-*)

Shower Seats



These items should be washed using a mild soapy cleaning agent, or with hot water.

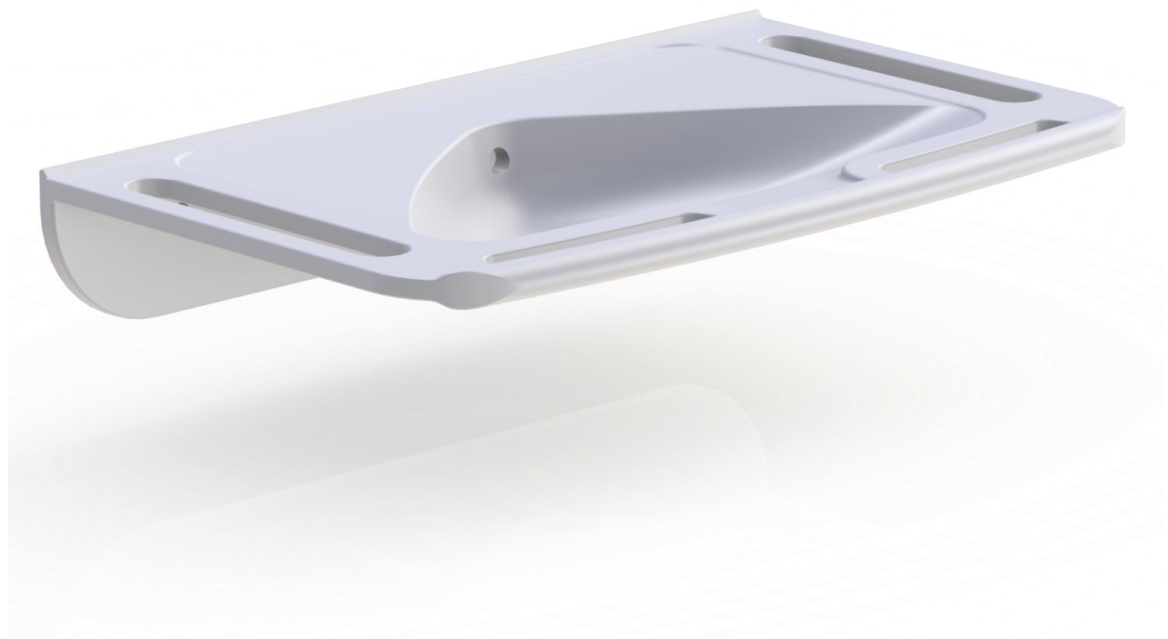
Important Notice: The use of corrosive, abrasive and chlorine-based cleaners and agents may result in damage or stains.

The plastic components are treated with a special anti-bacterial varnishing and should not be treated with corrosive agents.

The Seat cushion and backrest are easily removable for deep cleaning purposes.

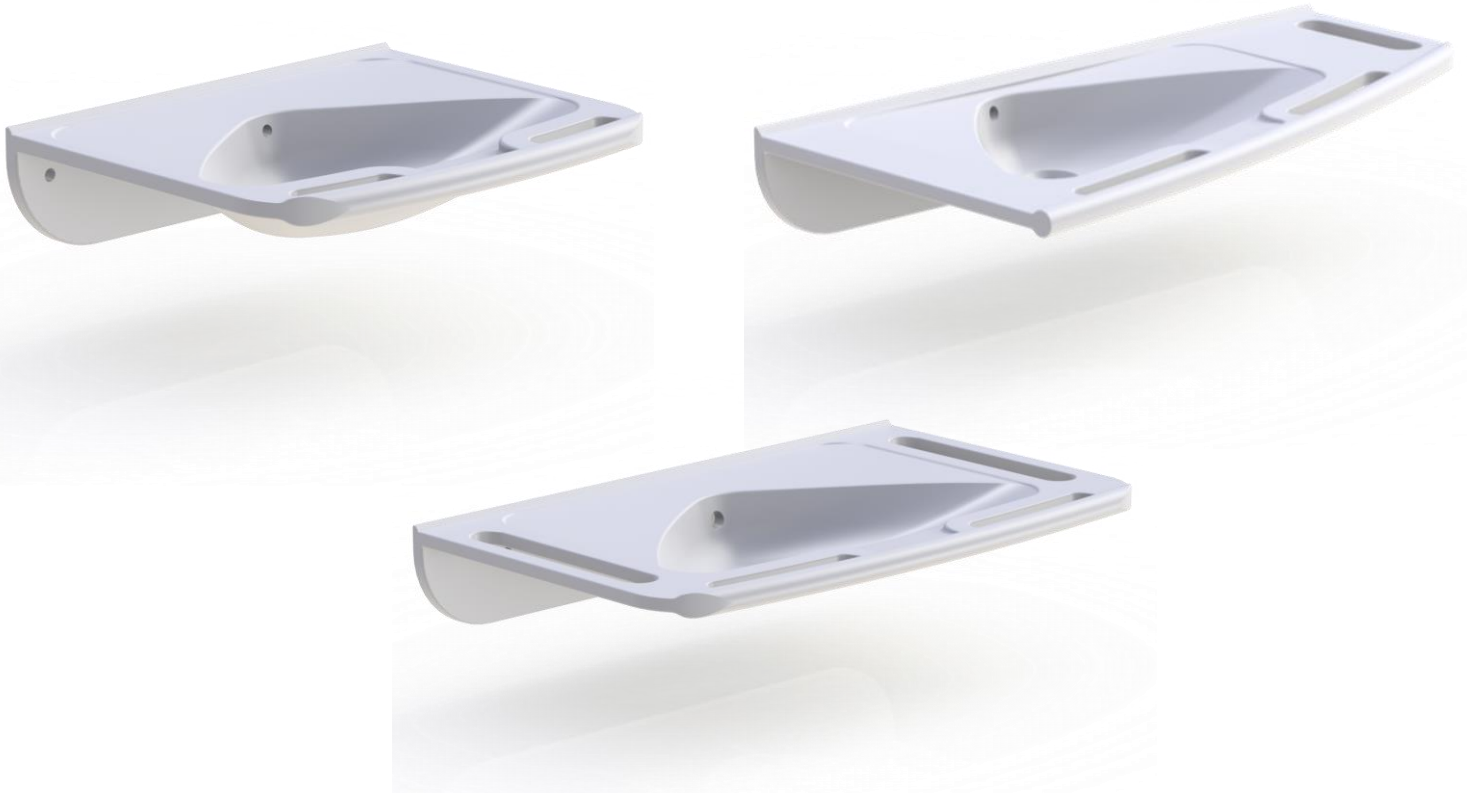
To Avoid the decalcification of aluminium surfaces, it is recommended that any residue of chalky deposits should be removed from all aluminium parts using a water-based solution of 3 parts of acetic acid with 7 parts of tap water. After cleaning, wipe down using a clean damp, soft cloth and clean water.

Washbasins



- Ergonomic washbasin, 60 cm with overflow hole (42-201-00)
- Ergonomic washbasin, 60 cm without overflow hole (42-202-00)
- Ergonomic washbasin, 90 cm with overflow hole (42-203-00)
- Ergonomic washbasin, 90 cm without overflow hole (42-204-00)
- Angular washbasin, right corner, 100 cm with overflow hole (42-205-00)
- Angular washbasin, right corner, 100 cm without overflow hole (42-206-00)
- Angular washbasin, left corner, 100 cm with overflow hole (42-207-00)
- Angular washbasin, left corner, 100 cm without overflow hole (42-208-00)

Washbasins



Daily care. Clean the surfaces using soapy water or a common detergent to remove most stains and the dirt that may have deposited. Gel detergents and abrasive products are particularly recommended in combination with a scrub sponge of the "Scotch Brite" type. Thoroughly rinse the surface with abundant water.

How to prevent damages. We do not recommend the use of aggressive chemicals such as acetone, trichloroethylene or strong acids or bases. Some substances such as ink, cosmetics and dyes may stain the surface if in prolonged contact with the material. All stains can however be removed by following the directions below.

How to remove stubborn stains, scratches and burns. Small surface damage can be restored using a Scotch Brite (3M registered trademark) scrub sponge combined with a common abrasive cleaner. If the damage is still visible, smooth the area using extra-fine sandpaper.

Suitable products. Detergent creams or powders which contain microgranules that scour the surface. Denatured ethyl alcohol can also be used, making sure the surface is then rinse.

Unsuitable products. Solvents such as acetone or trichloroethylene and other chemicals such as strong acids (e.g. muriatic acid) or strong bases (e.g. caustic soda) or very aggressive substances for clearing sink drains.